

NZLC WELLINGTON

STUDENT ACCOMODATION OPTIONS 2019



NZLC Wellington is located in the heart of the city, with easy access to public transport. There are a variety of accommodation options to choose from, including:

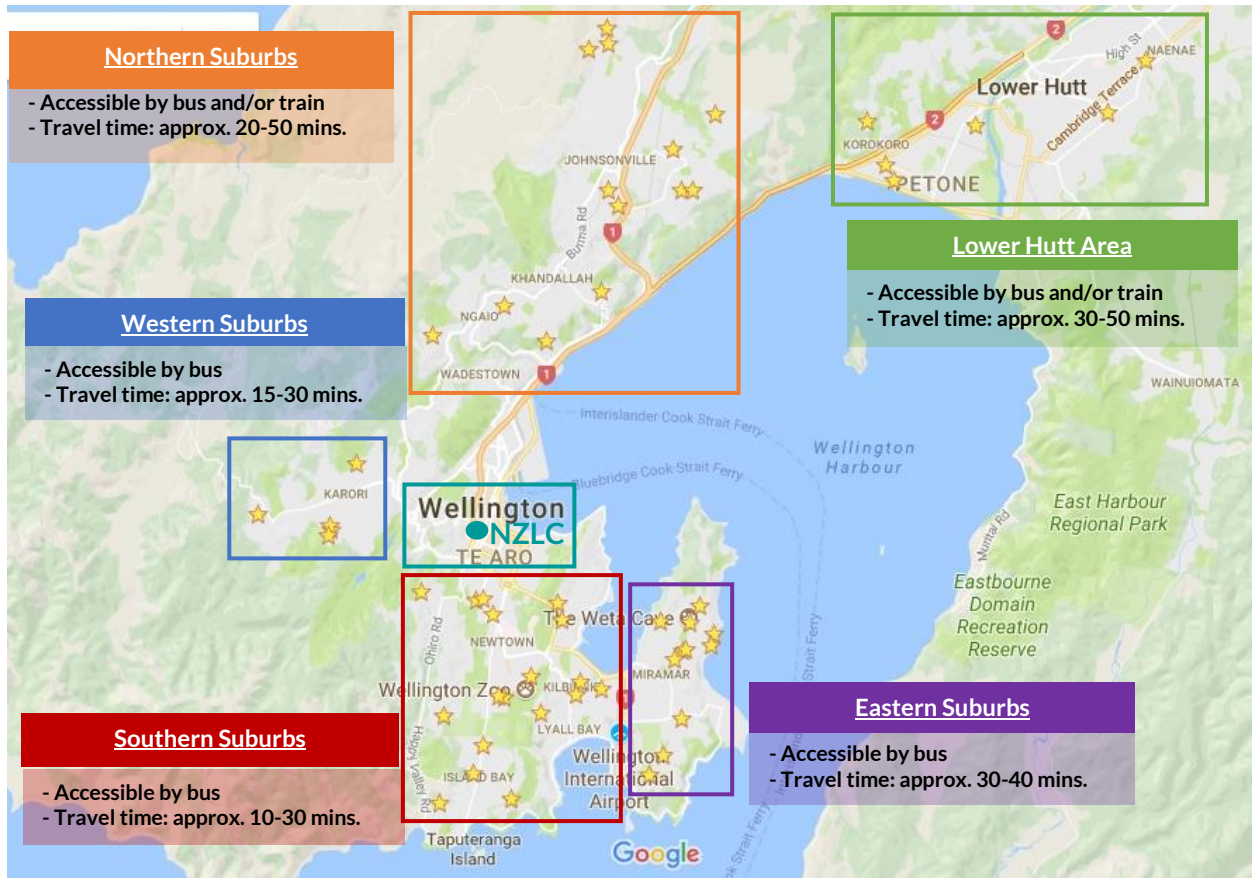
- ✓ Homestay
- ✓ City Accommodation
- ✓ Flatting

	Homestay	City Accommodation	Flatting
Cost per week	Half Board: \$290 (18 years +) Half Board: \$320 (13-17 years) Full Board: \$350 (13-17 years)	From \$240/w	\$160 - \$350/w
Minimum stay	1 week	2 weeks	Depends on flat (usually 3 -6 months)
Located in the city centre?	No	Yes	Depends on flat
Power included?	Yes	Yes	No (normally additional shared cost)
Internet included?	Yes	Yes (fees may apply)	No (normally additional shared cost)
Food included?	Half Board: Breakfast and dinner every day + lunch on weekends	No	No
Furnished?	Yes	Yes	Depends on flat

HOMESTAY

Staying with a friendly and caring homestay family is one of the best ways to experience the Kiwi culture, and at the same time practise English outside of the classroom. Our homestays are all very carefully selected and regularly inspected by our NZLC Accommodation Department.

Homestays are generally located 15 - 45 minutes travel distance by public transportation. The map below shows the distribution of our homestays (marked by yellow stars) in the Wellington city region, and the estimated travel time between each zone and NZLC Wellington:



It is very important for us and the homestay family to know if you have any special requests or needs, so we can make your stay as comfortable as possible.



CITY ACCOMMODATION

In addition to NZLC's homestay option, NZLC Wellington offers an accommodation arrangement service (\$250 arrangement fee) where students who are 18 years or older can choose to be placed in one of our city accommodation options. This is a good option if you want to live independently or in a convenient location. Below are the accommodation providers with whom NZLC Wellington is affiliated.

Budget Option - Laneway Backpackers

Laneway Backpackers offers a central city crash pad at a budget-friendly price, and just a 7-minute walk from NZLC. All rooms are located near the shared bathroom facilities, communal kitchen and dining/lounge area. Complimentary unlimited Wi-Fi is also included. This accommodation is ideal for couples or solo travellers on a budget.

Room Rates: (Minimum Stay = 2 weeks (14 nights))

Room Type	Capacity	1 - 31 January 2019	1 February - 30 June 2019	1 July - 31 December 2019
Double Room Shared Bathroom	1-2	\$240/week (\$34/night)	\$250/week (\$36/night)	\$260/week (\$37/night)
Twin Room* Shared Bathroom	2	\$260/week (\$37/night)	\$270/week (\$39/night)	\$280/week (\$40/night)

Accommodation Facilities:

- Shared bathroom with toilet, shower and vanity unit
- Shared kitchen with microwave, kettle, toaster, fridge and oven
- Dishware, cutlery, cookware and cooking utensils
- Shared laundry with ironing facilities; coin-operated washing machines and dryers (\$3 per wash and \$2 per dry cycle)
- Shared lounge with dining table and chairs, sofas and Freeview TV

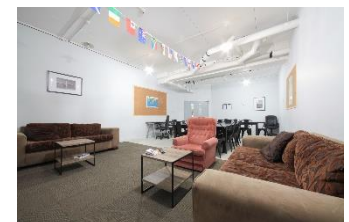
Room Facilities:

- Queen bed, desk, chair and clothes rack
- Bed linen and towels

Other Information:

Bond	Double Room: \$480 (January 2019) / \$500 (February - June 2019) / \$520 (July - December 2019). Twin Share: \$520 (January 2019) / \$540 (February - June 2019) / \$560 (July - December 2019).
Cancellation	7 days' notice required. More than 7 days: no penalty. Less than 7 days: 50% of one weeks' rent payable. All cancellations must be made in writing.
Damage	Any damage caused by guests will be charged at the time of check out. Lost key charge: \$63.25
Cleaning	Weekly service, including linen and towel change / Shared areas cleaned daily
Reception Hours	Monday - Saturday: 8.00am - 12.00am and Sunday: 10.00am - 6.00pm Check-in from 2.00pm and check-out by 10.00am
Wi-Fi Internet	Free Wi-Fi is limited to 2GB per room per night, up to a maximum allowance of 10GB

- All information is valid from 1 January 2019 - 31 December 2019
- Please note that, as this information concerns external parties to NZLC Wellington, prices and conditions may change without notice
- The photos above for the city accommodation options are for demonstration purposes only and some of the rooms may not have windows. The actual room you book may differ from the photos
- All bookings are subject to availability
- Above rates include water, power, weekly housekeeping and GST



Budget Option – Setup on Dixon

The **Setup on Dixon** is located in central Wellington CBD and offers an urban stay experience at a budget-friendly price. It is just a 5-minute walk from NZLC. All rooms include comfortable linen and are located near the shared bathroom facilities, communal kitchen and dining/lounge area. This accommodation is ideal for tourists and long stay guests alike.

Room Rates: (Minimum Stay = 2 weeks (14 nights))

Room Type	Capacity	1 January 2019 - 30 June 2019	1 July 2019 - 31 December 2019
Double Room with Shared Bathroom	1-2	\$270/week (\$39/night)	\$290/week (\$42/night)



Accommodation Facilities:

- Shared bathroom with toilet, shower and vanity unit
- Shared kitchen has cooking facilities such as stoves, ovens, microwaves, and fridges/freezers. Please enquire at reception should you require cooking utensils.
- Shared laundry with ironing facilities and coin-operated washing machines and dryers (\$3 per wash and \$2 per dry cycle)
- Shared lounge with dining table and chairs, sofas and Freeview TV



Room Facilities:

- 1x Queen bed, desk, chair, clothes rack, LCD TV, Bar fridge and Tea/Coffee maker
- Bed linen and towels



Other Information:

Bond	\$540 (January – June 2019) / \$580 (July – December 2019)
Cancellation	7 days' notice required. More than 7 days out: no penalty. Less than 7 days: 50% of one weeks' rent payable. All cancellations must be made in writing.
Damage	Any damage caused by guests will be charged at the time of check-out Lost key charge: \$63.25
Cleaning	Weekly service, including linen change / Shared areas cleaned daily
Reception Hours	Monday – Saturday: 8.00am – 12.00am and Sunday: 10.00am – 6.00pm Check-in from 2.00pm and check-out by 10.00am
Wi-Fi Internet	Free Wi-Fi is limited to 2GB per room per night, up to a maximum allowance of 10GB

- All information is valid from 1 January 2019 – 31 December 2019
- Please note that, as this information concerns external parties to NZLC Wellington, prices and conditions may change without notice
- The photos above for the city accommodation options are for demonstration purposes only and some of the rooms may not have windows. The actual room you book may differ from the photos
- All bookings are subject to availability
- Above rates include water, power, weekly housekeeping and GST

Standard Option - The Setup on Manners

The **Setup on Manners** offers comfortable and affordable short-term and long-term accommodation in the centre of Wellington city, just a 7-minute walk from NZLC. Each apartment has its own kitchenette and ensuite bathroom. This accommodation is ideal for couples or solo travellers looking for a fully furnished studio in a great location.

Room Rates: (Minimum Stay = 2 weeks (14 nights))

Room Type	Capacity	2019
Queen Studio	1-2	\$505/week (\$72/night)



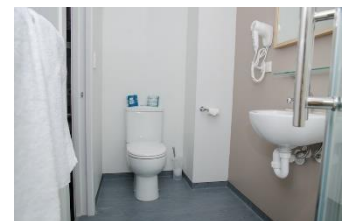
Accommodation Facilities:

- Shared laundry with ironing facilities and coin-operated washing machines and dryers (\$3 per combined wash and dry cycle)
- Shared balcony
- On-site undercover car parking available at \$15 per night



Room Facilities:

- Queen bed, desk, chair, wardrobe and SKY TV
- Bathroom with toilet, shower, vanity unit and hair dryer
- Kitchenette with microwave, kettle, toaster, fridge and cooktop
- Dishware, cutlery, cookware and cooking utensils
- Bed linen and towels



Other Information:

Bond	\$1010
Cancellation	7 days' notice required. More than 7 days out: no penalty. Less than 7 days: 50% of one weeks' rent payable. All cancellations must be made in writing.
Damage	Any damage caused by guests will be charged at the time of check-out
Cleaning	Weekly service, including linen change
Reception Hours	Monday - Sunday: 8.00am - 12.00am Check-in from 2.00pm and check-out by 10.00am
Wi-Fi Internet	500MB/day free of charge

- All information is valid from 1 January 2019 - 31 December 2019
- Please note that, as this information concerns external parties to NZLC Wellington, prices and conditions may change without notice
- The photos above for the city accommodation options are for demonstration purposes only and some of the rooms may not have windows. The actual room you book may differ from the photos
- All bookings are subject to availability
- Above rates include water, power, weekly housekeeping and GST

FLATTING

You can rent a room in a house called a ‘flat’ that you share with other people. This is called ‘flating’, and is very common in New Zealand. This is a good option if you want to have freedom, yet live with a group of people. Living with people from other countries is a good way to practise your English and make new friends.

The cost of flatting will vary depending on the distance from the city centre, the number of people sharing, and the size and quality of the rooms. We advise students to organise a flat viewing to check the flat conditions. You can expect to pay anywhere between \$150 and \$300 per week for your room in the flat plus moving in costs, such as a bond and letting fee, as well as pay a share of the other costs, such as power, internet, food and cleaning supplies/waste disposal.

This option is suitable for students who are planning to stay in the flat for a longer period (6 months or more). If you decide to go flatting, you can find a group of people you would like to live with and then go looking for a flat that will suit your group, or you can look for an existing flat that has a room available.

The table below is a sample budget based on an individual sharing with two other tenants in a 3-bedroom flat:

Expenses	Cost per person per week
Rent	\$235
Power	\$15
Internet	\$10
Food	\$80
Shared household products (cleaning supplies, etc.)	\$5
Total	\$345

If you decide that flatting is the best option for you, it is a good idea to book either homestay accommodation or city accommodation for the first 2 - 4 weeks of your stay in New Zealand. This will allow you time to search and secure a suitable place.

Popular websites or Facebook groups to search for flats include:

- Facebook groups: Flatmates wanted wellington
- www.trademe.co.nz/property
- www.trademe.co.nz/flatmates-wanted

